

ContiMixer –
Continuous
powder wetting
and dispersing
process.



Continuous powder wetting and dispersing process. ContiMixer for manual or automated systems.

- Manual powder feeding or big bag feeding station
- Gravimetric solids dosing or differential dosing scale
- Liquid dosing via mass flow meter
- ContiMixer – twin screw for continuous wetting and pre-dispersing
- Optional downstreamed mixing or dispersing unit (mixer, bead mill, three roll mill)

Buhler Plant Know-how

- Process definition
- Plant engineering
- Process automation
- Manufacturing
- Installation and start-up
- Customer service



- Closed continuous processing
- Efficient and immediate wetting
- Massive mixing time reduction (hours to minutes)
- Low heat generation and temperature increase



ContiMixer in operation: pre-dispersing of offset inks.

Application examples.

Printing Inks

Continuous production concept for medium to highly viscous pigment concentrates with capacities up to 2.000 kg/h.



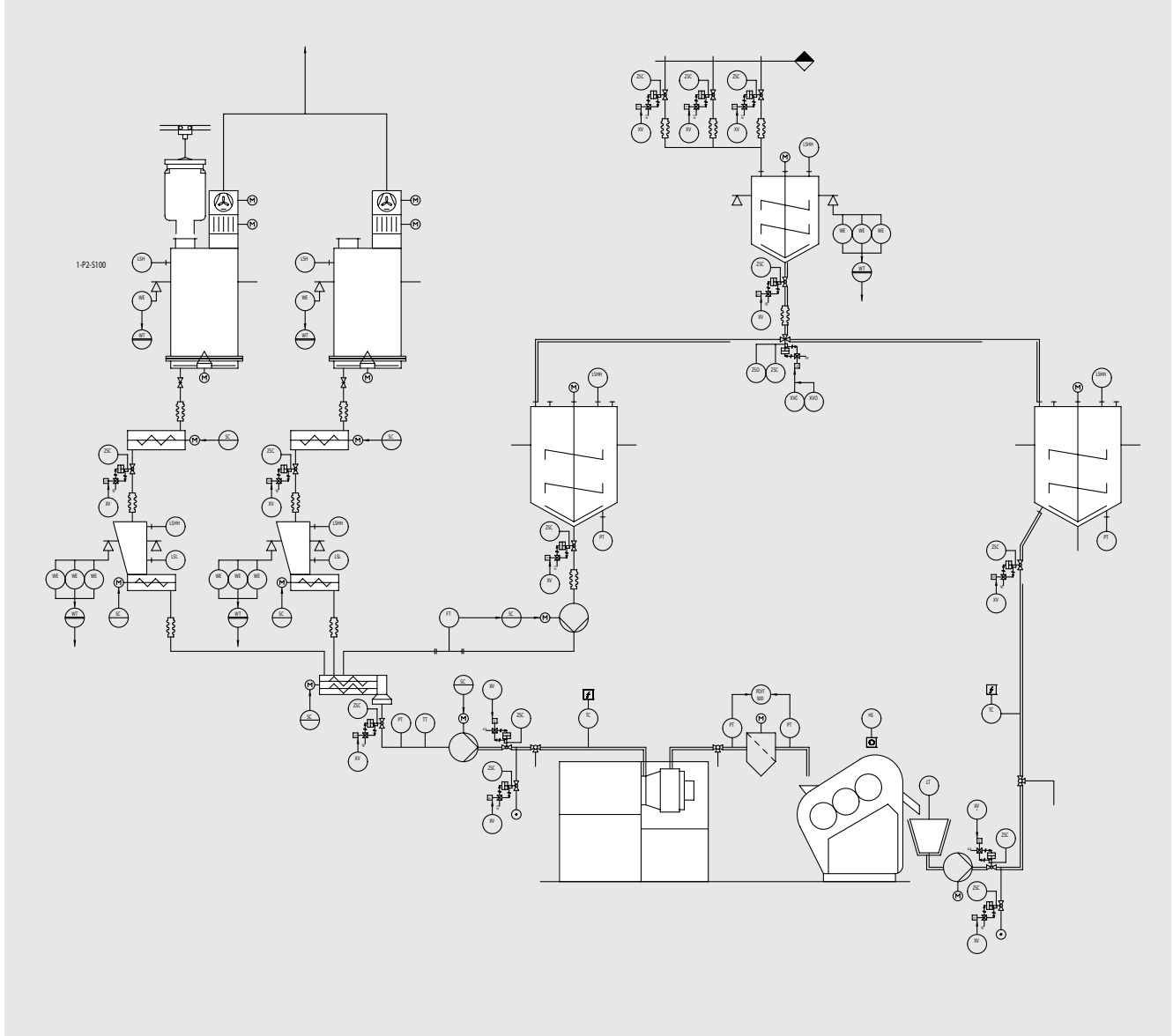
Glass or metal paste for electronic industries

Closed process for pre-dispersion of high value glass or metal pastes.



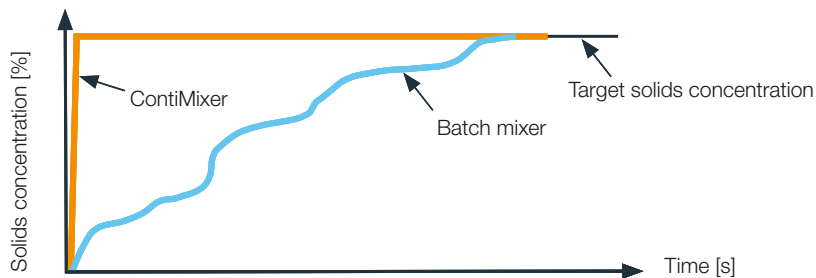
Tailored plant engineering.

Turn-key from concept to start-up.



Solids concentration development in a suspension during the wetting and mixing process.

Application example: Metal paste



	Mixing time	Particle size
Batch mixer	18 hours	100%
ContiMixer	55 seconds	100%

Bühler AG
CH-9240 Uzwil, Switzerland
T +41 71 955 11 11
F +41 71 955 31 49
grinding.dispersion@buhlergroup.com
www.buhlergroup.com

