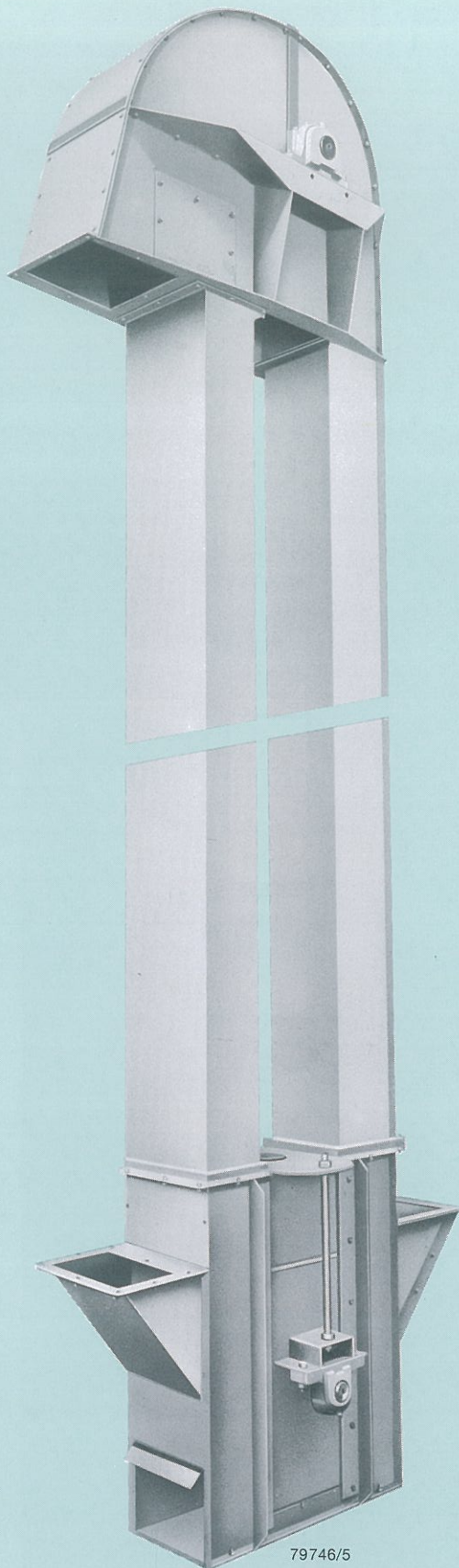
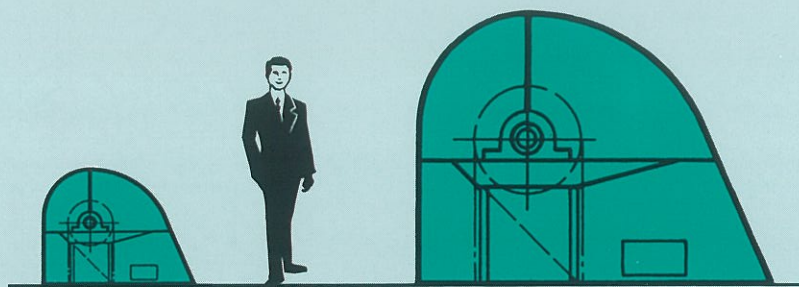


RGEL

# Belt Bucket Elevator



79746/5



## Application

Thanks to its efficiency, the belt bucket elevator is the ideal type of conveyor for vertical handling of bulk materials with particle sizes of up to 50 mm and temperatures of up to 170°C.

It is designed for applications in the food as well as the nonfood industries, e.g. in

- materials storage and handling systems for grain and oilseeds
- flour mills and feed mills
- malhouses
- food processing plants
- cocoa and coffee processing plants
- fertilizer factories
- chemical plants and similar industries

If you have handling problems with special materials, please contact us. We have a test facility at our plant enabling us to conduct materials handling tests under field conditions.

Our specialists will welcome the challenge to find the best solution to your specific problems.

**BUHLER**  
YOUR PERFORMANCE IN MIND

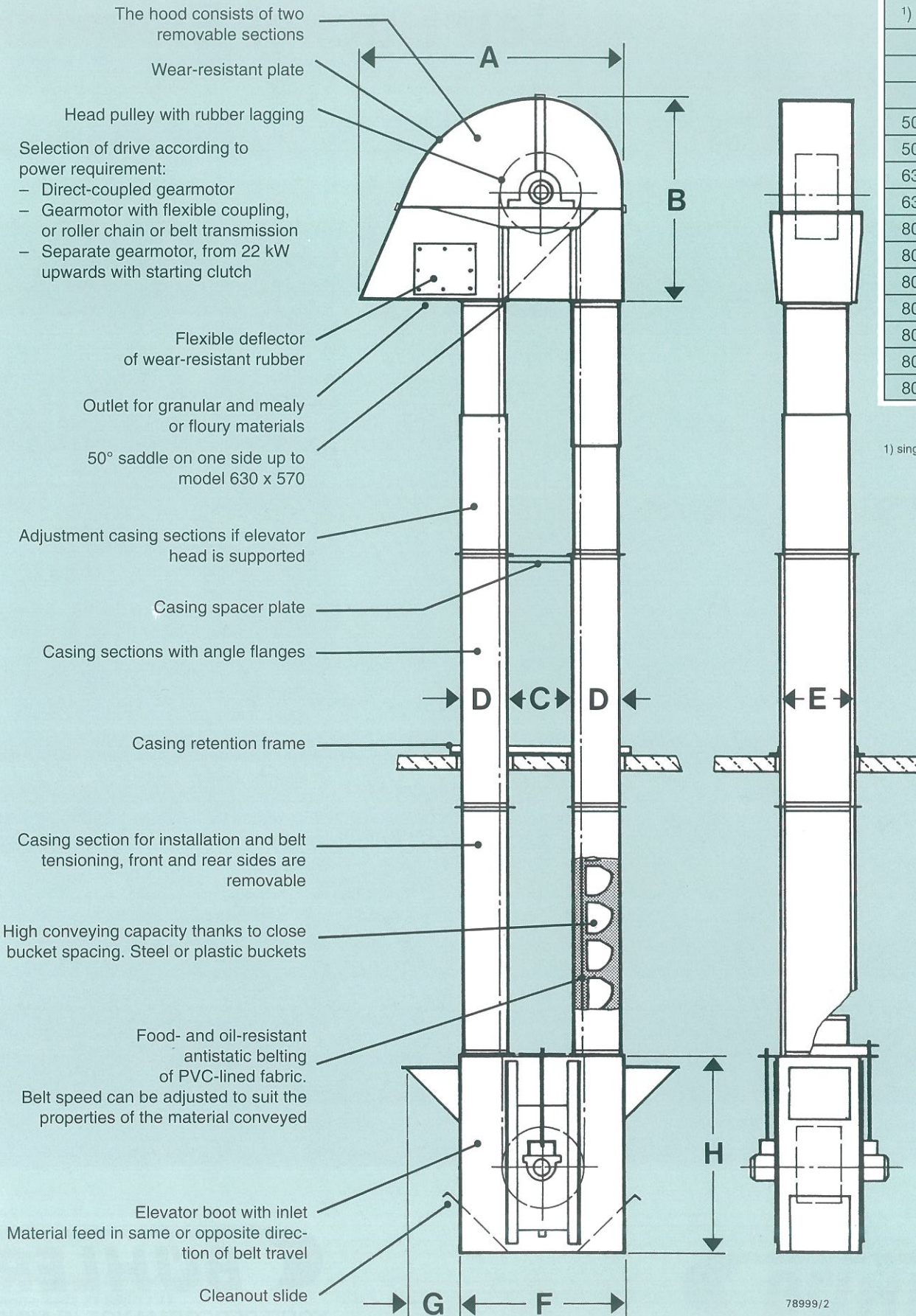
**Design**

The entire casing is fabricated of sheet steel. In compliance with international safety regulations, the erection and inspection openings can only be opened by means of tools.

Type  
Diam. x width of  
pulley

in mm

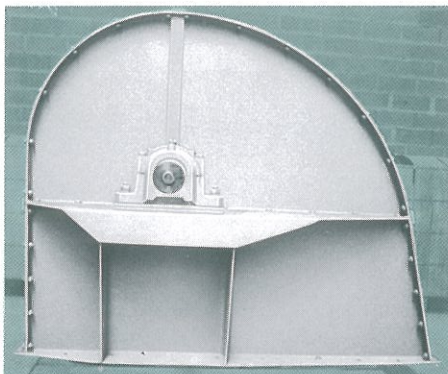
|    |                 |   |
|----|-----------------|---|
| 1) | 216 x 140       | → |
|    | 250 x 150       | → |
|    | 320 x 190       | → |
|    | 400 x 240       | → |
|    | 500/ 630 x 300  | → |
|    | 500/ 630 x 360  | → |
|    | 630/ 800 x 440  | → |
|    | 630/ 800 x 570  | → |
|    | 800/1000 x 800  | → |
|    | 800/1000 x 980  | → |
|    | 800/1000 x 1190 | → |
|    | 800/1000 x 1360 | → |
|    | 800/1000 x 1640 | → |
|    | 800/1000 x 1900 | → |
|    | 800/1000 x 2180 | → |



1) single-strand casing

## Technical data, conveying capacities, headroom requirements, dimensions

| Granular materials<br>$\gamma \geq 0.75 \text{ t/m}^3$ |            | Mealy materials<br>$\gamma \geq 0.5 \text{ t/m}^3$ |            | Allowable height<br>(center distance)<br>m | A         | B         | C       | D       | E       | F         | G<br>inlet<br>$\varnothing$ | H         |
|--------------------------------------------------------|------------|----------------------------------------------------|------------|--------------------------------------------|-----------|-----------|---------|---------|---------|-----------|-----------------------------|-----------|
| Capacity                                               | Belt speed | Capacity                                           | Belt Speed |                                            |           |           |         |         |         |           |                             |           |
| t/h                                                    | m/s        | t/h                                                | m/s        |                                            |           |           |         |         |         |           |                             |           |
| 17,7                                                   | 2,2        | 9,1                                                | 1,8        | 30                                         | 766       | 592       | –       | 454     | 164     | 450       | 203                         | 453       |
| 19,3                                                   | 2,4        | 9,6                                                | 1,9        | 37                                         | 881       | 638       | 186     | 184     | 184     | 550       | 270                         | 753       |
| 45,3                                                   | 2,8        | 22,4                                               | 2,2        | 37                                         | 1057      | 799       | 256     | 204     | 224     | 660       | 315                         | 813       |
| 78,5                                                   | 3,0        | 39,4                                               | 2,4        | 44                                         | 1276      | 968       | 336     | 234     | 284     | 800       | 385                         | 1000      |
| 136                                                    | 3,2        | 69,5                                               | 2,6        | 54/86                                      | 1557/1798 | 1204/1469 | 426/556 | 274     | 364     | 970/1100  | 406                         | 1136/1474 |
| 212                                                    | 3,2        | 108                                                | 2,6        | 41/66                                      | 1692/1819 | 1344/1519 | 426/556 | 314     | 424     | 1050/1180 | 466                         | 1234/1514 |
| 327                                                    | 3,4        | 163                                                | 2,7        | 62/83                                      | 1987/2382 | 1519/1704 | 525/684 | 365/391 | 495/496 | 1250/1460 | 764/766                     | 1606/1956 |
| 442                                                    | 3,4        | 220                                                | 2,7        | 62/83                                      | 1987/2382 | 1519/1704 | 525/684 | 365/391 | 635/636 | 1250/1460 | 764/766                     | 1606/1956 |
| 655                                                    | 3,6        | 331                                                | 2,9        | 83                                         | 2382/2582 | 1706/2056 | 684/884 | 391     | 866     | 1460/1660 | 766                         | 1956/2256 |
| 806                                                    |            | 407                                                |            |                                            |           |           |         |         | 1046    |           | 766                         | 1956/2256 |
| 983                                                    |            | 497                                                |            |                                            |           |           |         |         | 1276    |           | 768                         | 1958/2258 |
| 1123                                                   |            | 569                                                |            |                                            |           |           |         |         | 1446    |           |                             |           |
| 1386                                                   |            | 701                                                |            |                                            |           |           |         |         | 1726    |           |                             |           |
| 1612                                                   | ↓          | 815                                                | ↓          | ↓                                          | ↓         | ↓         | ↓       | ↓       | 1986    | ↓         | ↓                           | ↓         |
| 1874                                                   | 3,6        | 947                                                | 2,9        | 83                                         | 2382/2582 | 1706/2056 | 684/884 | 391     | 2226    | 1460/1660 | 768                         | 1958/2258 |

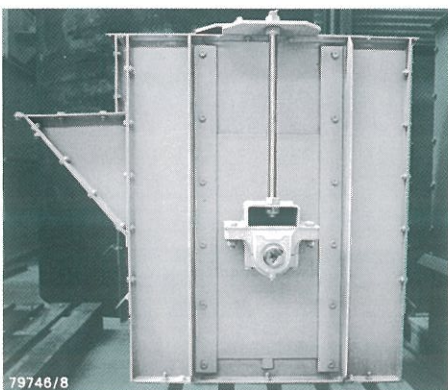


Elevator head.

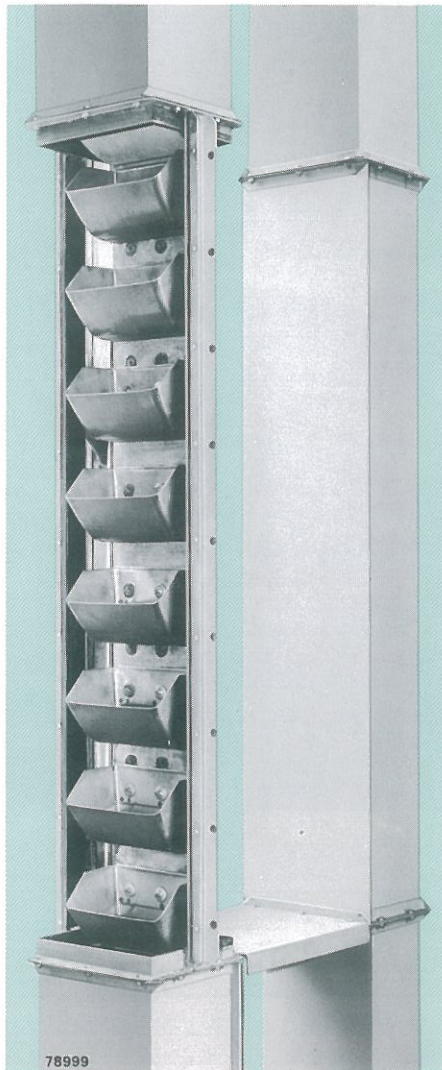
79746/2

Opened casing section for belt tensioning and standard casing section.

Elevator boot with one inlet.



79746/8



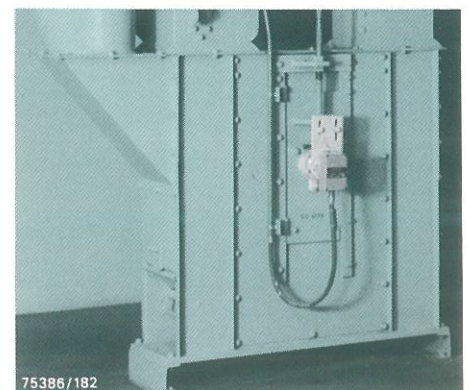
78999

The values in the chart are based on:

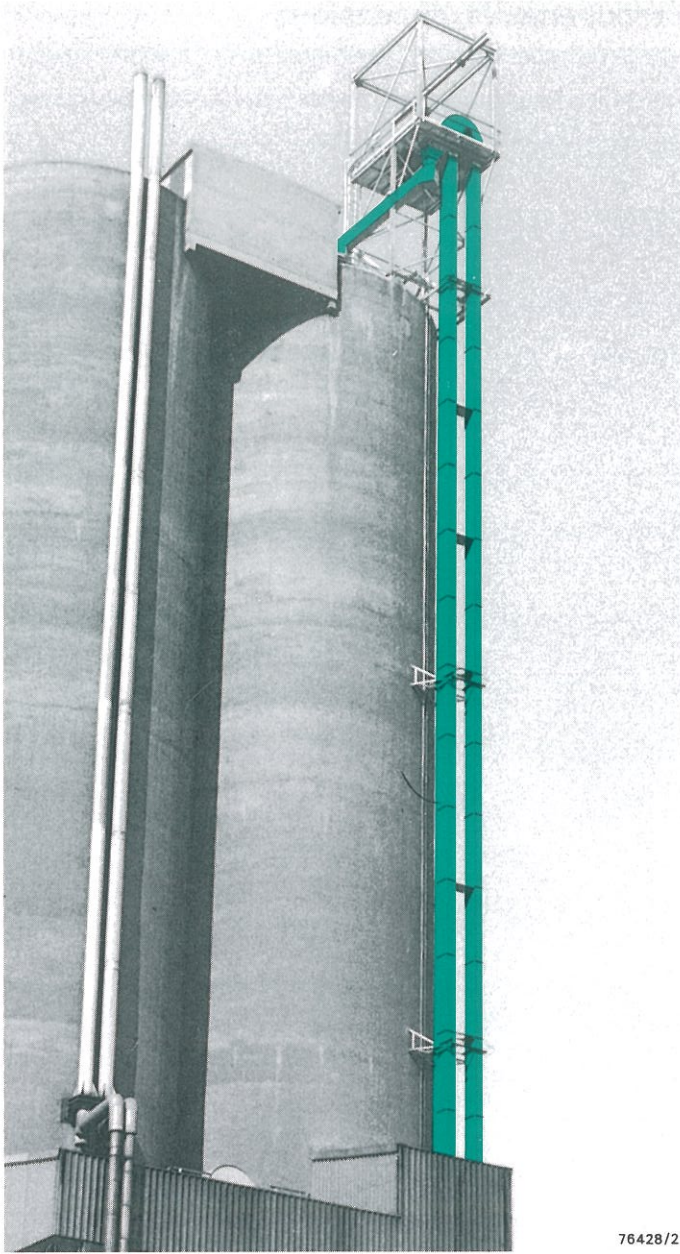
- grain  $\gamma = 0.75 \text{ t/m}^3$
- meals and flours  $\gamma = 0.50 \text{ t/m}^3$
- close bucket spacing
- standard buckets

For other materials and other operating data, the maximum capacity and the lift may differ widely from the above values.

The elevators can be additionally equipped with an electronic speed monitor and/or a device for monitoring the end position of belt take-up.



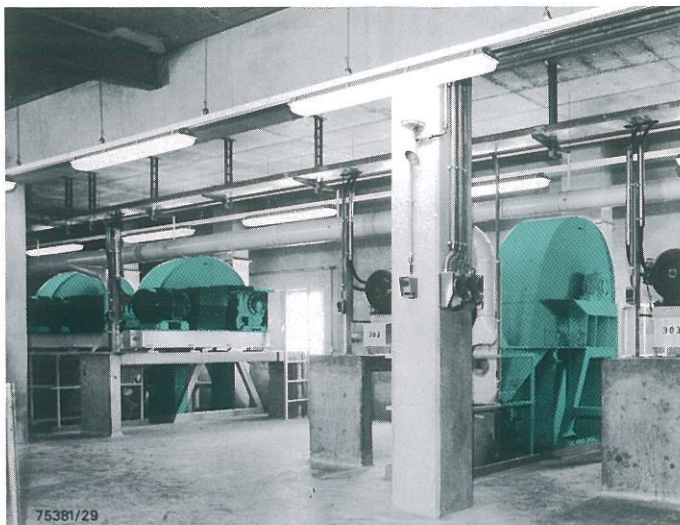
75386/182



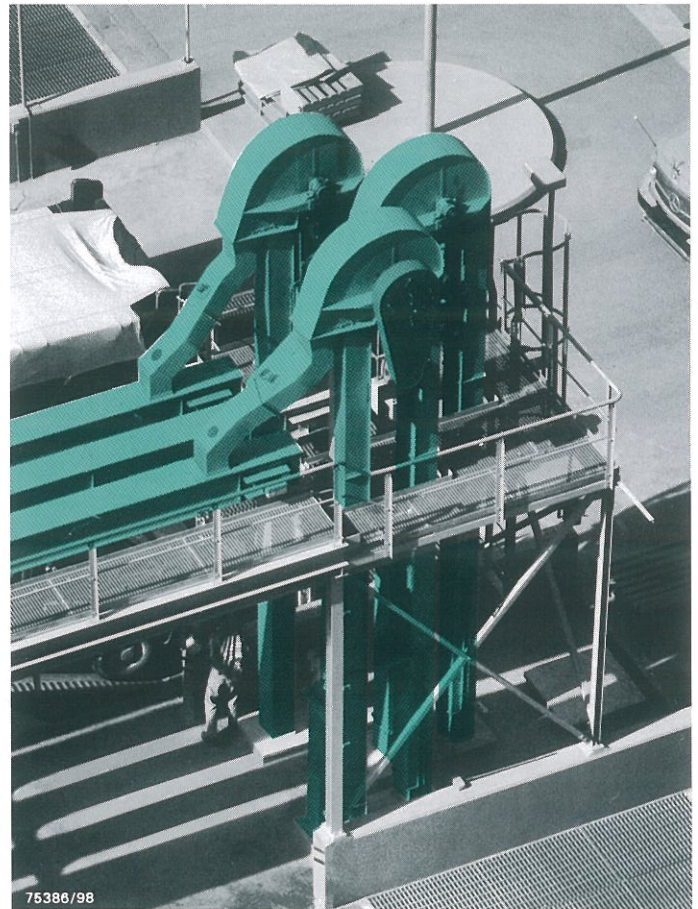
76428/2

### Special designs and options

- Gravity take-up with limit switches
- Buckets with reinforced lips
- Plastic buckets
- Stainless buckets
- Heat-resistant rubber belting, antistatic
- Belt installation and tensioning device
- Back stop on the free head shaft end (up to model 630x360)
- Speed monitor
- Belt alignment monitor
- Speed reduction drive for inspections
- Weatherproof design
- Exhaust connection
- Safety features for protection against dust explosions
- Explosion control features



75381/29



75386/98

Bühler AG  
 CH-9240 Uzwil, Switzerland  
 Phone ++41 71 955 11 11  
 Fax ++41 71 955 33 79  
 www.buhlergroup.com

**BUHLER**  
 YOUR PERFORMANCE IN MIND